

THIS INSTRUMENT PREPARED BY  
 DAVID P. LINDLEY  
 OF  
**CAULFIELD and WHEELER, INC.**  
 SURVEYORS - ENGINEERS - PLANNERS  
 7900 GLADES ROAD, SUITE 100  
 BOCA RATON, FLORIDA 33434 - (561)392-1991  
 CERTIFICATE OF AUTHORIZATION NO. LB 3591

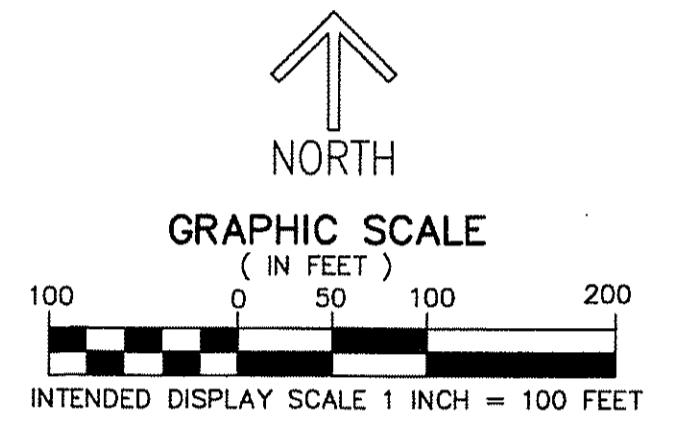
# EVERGLADES POLO

A PORTION OF THE SOUTHWEST 1/4 OF SECTION 33, TOWNSHIP 44 SOUTH, RANGE 41 EAST,  
 VILLAGE OF WELLINGTON, PALM BEACH COUNTY, FLORIDA

161

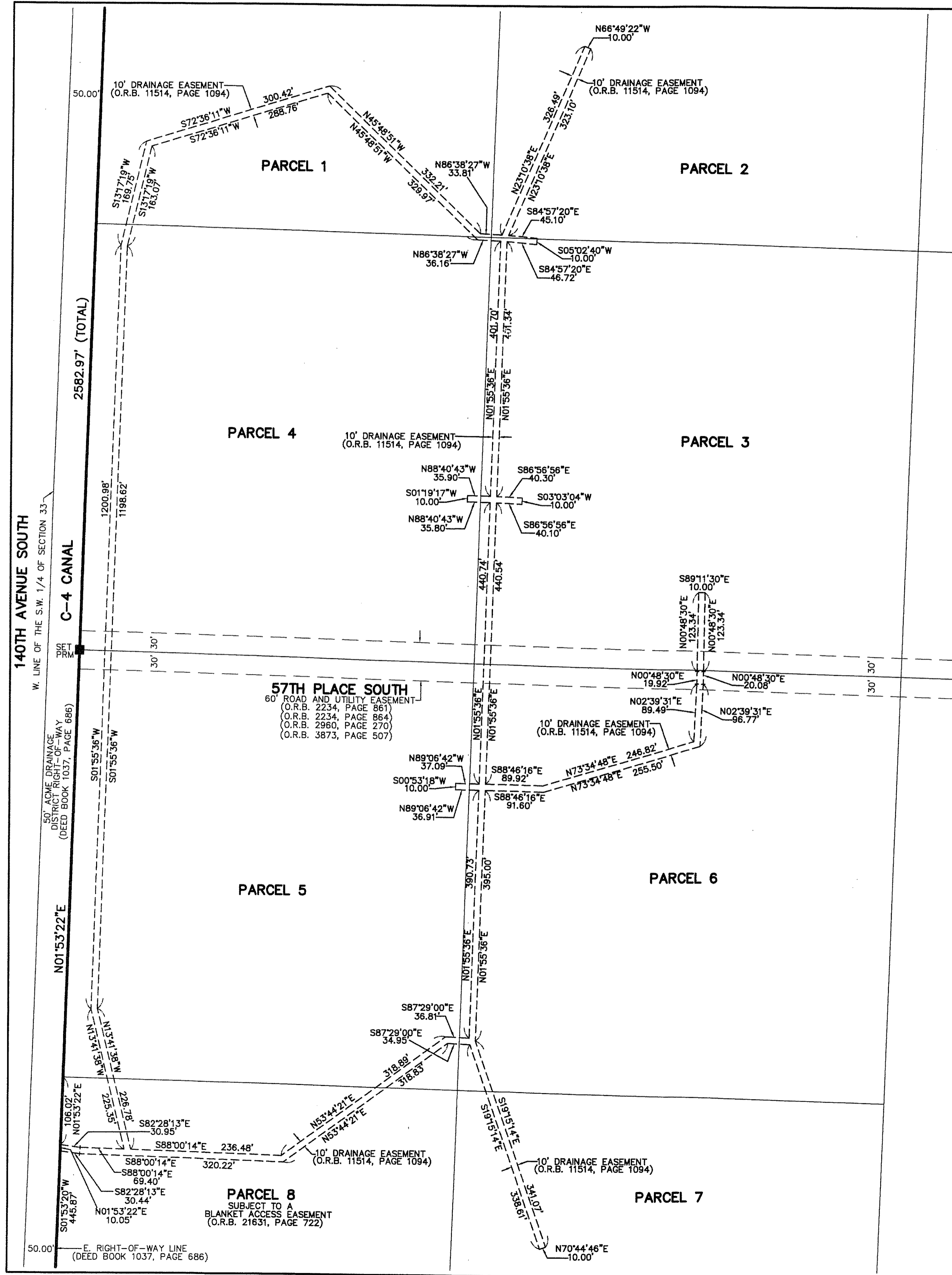
STATE OF FLORIDA  
 COUNTY OF PALM BEACH  
 THIS PLAT WAS FILED FOR  
 RECORD AT \_\_\_\_\_ M.  
 THIS \_\_\_\_\_ DAY OF \_\_\_\_\_  
 A.D. 201\_\_\_\_ AND DULY RECORDED  
 IN PLAT BOOK \_\_\_\_\_ ON  
 PAGES \_\_\_\_\_ AND \_\_\_\_\_  
 SHARON R. BOCK  
 CLERK AND COMPTROLLER  
 BY: \_\_\_\_\_  
 DEPUTY CLERK

**SHEET 4 OF 25**



**LEGEND / ABBREVIATIONS**  
 AC - ACRES  
 FPL - FLORIDA POWER & LIGHT CO.  
 LB - LICENSED BUSINESS  
 O.R.B. - OFFICIAL RECORD BOOK  
 SF - SQUARE FEET  
 Δ - DENOTES CENTRAL ANGLE  
 R - DENOTES RADIUS  
 L - DENOTES ARC LENGTH  
 ■ PRM - DENOTES PERMANENT REFERENCE MONUMENT  
 4" x 4" x 24" CONCRETE MONUMENT WITH  
 ALUMINUM DISK STAMPED "C&W PRM LB3591"  
 ● - DENOTES PERMANENT REFERENCE MONUMENT  
 NAIL AND METAL DISK STAMPED "PRM LB3591"

## DRAINAGE EASEMENT DETAIL



## EASEMENT DETAILS

## BRIDLE PATH TRAIL EASEMENT DETAIL

